

# The Paper

Our Town, Our Paper!



Laurens, Iowa



Vol. 19 No. 16

www.thepapernow.com

November 13, 2024

## Local News

### Rotary Club Provides Dictionaries to Students

On November 6th the Pocahontas Area Rotary Club proudly presented dictionaries to third grade children in Pocahontas County: Pocahontas Catholic School, Pocahontas, Area Community School District, and Laurens-Marathon Community Schools District. Dictionaries were provided to each student.

Third grade has been designated because the students are developing dictionary skills and are beginning to use other resource materials. In addition, students in third grade make the transition from learning to read to reading to learn. All formal education from this point through college is dependent upon the ability of each child to read and to understand what he or she reads. The Pocahontas Area Rotary Club wants our children to succeed in education by providing this resource to them. The students will benefit from the additional resources in the dictionary: International Atlas, Periodic Tables, Sign Language chart, Roman Numeral Tables and other information.

*More Photos on Page 2!*



Laurens-Marathon

Front row L R: Teacher Afton Brinkman, Cristy Delgado, Harper Ruthart, Graceful Kin, Sofia Herrera, Kinley Hill, and Mabel Toner.

Second row L to R: Rotarian Helen Beneke, Gannon Reed, Nolan Cairy, Jens Johnsen, Austin Steward, Camdyn Meyer, Mateo Weig, Keiler Narciso, and Abel Stougard



PAC Elementary  
Front row: L to R: Thalia, Dani, Naomi, Elanor, Jackson, Sebastian, Izaiah, Krey, Elexa, Genevieve, Jordy  
Middle row: L to R: Harper, Trinity, Taylor, Emersyn, Kase, Brooklyn, Jocelyn, Deklan, Archer, Allora, Jace, Taiylihonna  
Back row: L to R: Kourtney, Kaci, Lexi, Oliver, Torian, Elyana, Katelyn, Graycee, Teagen, Kaelynn, Lylah, Braylinn, Trinity



Pocahontas Catholic School  
Front row: L to R: Graham Krischel, Scarlette Harrington, Lilly Nedved, Kruze Meyer, Quintin Hingson, Jett Essing, Wyatt Rittgers  
Second row: L to R: Caleb Wells, Avery Schoon, Abel Braunschweig, Wiley Frerk, Hazel Williams, Karlee Vader, Liv Kakacek  
Third row: L to R: Rotary member, Deb Ripperger, Zander Redemske, Aurora Poppen, Mrs. Crotty, Wyatt Kraft, Greyson VanDonge, Drew Henderson, Rhyen Kopriva, Rotary member Helen Beneke.

## *Jack Link's Announces Strategic Restructuring*

At Jack Link's, we have made the difficult decision to restructure our operations, which includes downsizing our Laurens, IA facility. This decision was not made lightly and was driven by careful consideration for the future of our business and the people who have made it strong. We understand the impact of this news on our valued Team Members, and our primary focus is on supporting them through this transition.

In line with this commitment, we are offering affected Team Members the option to apply for roles at our expanded facility in Underwood, IA, where recent investments have created new paths for growth and innovation. We know that relocating is a significant decision, and we are here to provide resources, guidance, and relocation assistance to help make this transition as smooth as possible for those who choose this path.

We recognize that change is challenging, and we are dedicated to standing by our Team Members and the Iowa workforce during this time. Jack Link's has deep roots in Iowa, and our commitment to supporting the state's workforce and contributing to the Iowa economy remains strong. Our Team Members' dedication and hard work have been essential to our success, and we are deeply grateful. As we navigate this transition together, we remain committed to fostering a strong future for both our team and the communities we call home.

## *Laurens 4-H Club Serves the Community*

The Laurens 4-H Club had a great time at the Laurens Trunk or Treat event on Halloween night!

Our members put together over 100 delightfully spooky bags filled with candy and 4-H goodies. It was a night full of fun and sweet treats as we brought smiles and joy to the community!



## *Registration Open - Festival of Trees*

Time to get in the Holiday spirit! Registrations are now available for Laurens Festival of Trees, which will again be held at the Laurens United Methodist Church. Individuals, organizations, and businesses are encouraged to join this community event.

Bring your own tree, or use one from our forest! Tree set up and trimming will occur December 1-3. This nondenominational display will be open to the public all the weekends in December.

Registration forms are available on our Facebook page & at the Laurens Public Library.

---

Send Your News to

**The Paper!**

[www.thepapernow.com](http://www.thepapernow.com)

100% User

Generated Content!

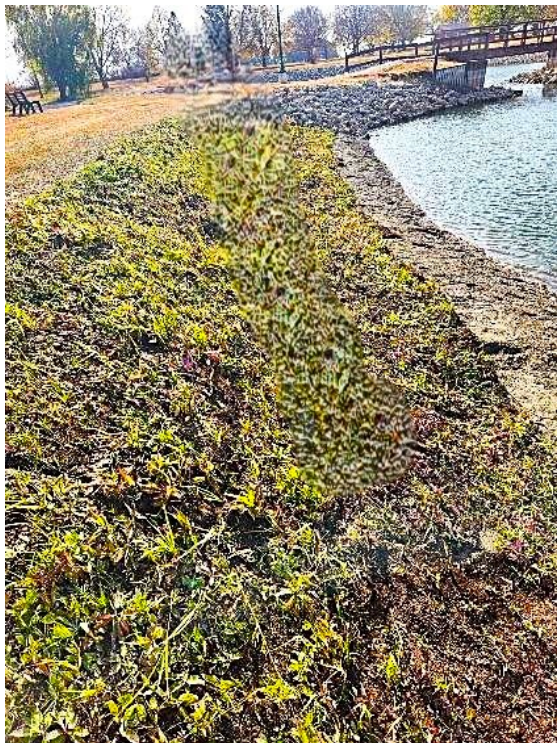
Subscribe and  
Submit **TODAY!**



## Sportsman's Park Pond Shoreline Improvements

Shoreline restoration continued this fall at Sportsman's Park Pond with the addition of a native vegetated mat designed to control erosion on this slope of the pond. Next spring, summer and fall the diverse native plant species will explode with seasonal colors and textures, beautifying the shoreline.

Laurens city employees and Hometown Pride committee members have been working together to complete the pond and shoreline restoration project. An IDNR Resource Enhancement and Protection (REAP) grant was received by the City to complete this project.



## Inspire POCO Leadership Program

Make sure you register to join us for the 4 part leadership program including public service, government and medical services. We want you to be able to harness your personal skills to inspire Pocahontas County.

Inspire POCO is a county leadership program created to inspire future leaders in our community. This four-part program will address the current county vision in the areas of **public service, government & medical services**. Attendees will take a deeper look into leadership roles.

<p>ALL CLASSES WILL BE AT THE AEA 500 NE 6TH ST., POCAHONTAS, IA 50574</p>		<p>THE 4- PART INSPIRE POCO LEADERSHIP PROGRAM HELPS COMMUNITY MEMBERS DEVELOP THEIR LEADERSHIP POTENTIAL AND PROVIDES INSIGHT INTO THE KEY AREAS OF PUBLIC SERVICE, GOVERNMENT, SAFETY AND MEDICAL SERVICES. THROUGH THE SESSIONS, YOU WILL:</p> <ul style="list-style-type: none"> <li>Gain a deeper understanding of public service &amp; safety initiatives</li> <li>Learn how local government functions &amp; impacts everyday life</li> <li>Explore the essential role of medical services in our county's well-being</li> <li>Connect with current leaders and peers who are committed to making a difference</li> </ul>
<p>January 14, 9-4PM <b>Introduction of classes</b> Real Colors Personality Assessment</p>	<p>February 11, 9-4PM <b>Public Service &amp; Safety</b></p>	
<p>March 11, 9-4PM <b>Government</b></p>	<p>April 8, 9-4PM <b>Medical Services</b></p>	
<p>11:30 LUNCH SERVED 9:00AM - 4:00PM PROGRAM</p>		

**MISSION:**  
Inspire leadership to support the common good and quality of life in Pocahontas County.

REGISTER WITH THE QR CODE!!

BY THE END OF THE PROGRAM, YOU'LL BE READY TO HARNES YOUR TALENTS, AND CONTRIBUTE TO POCAHONTAS COUNTY'S GROWTH. INSPIRE POCO IS THE IDEAL PLATFORM TO INSPIRE CHANGE AND EXPAND YOUR LEADERSHIP SKILLS!



SCAN THIS CODE USING YOUR PHONE'S CAMERA TO ACCESS THE REGISTRATION FORM!

11 West Elm Ave Pocahontas, IA    discoverpoco.com    Litwiller@iowacentral.edu

***At the Library***  
***with Glenda Mulder***  
***November 12, 2024***

Happy November! The last few weeks have been a bit of a whirlwind, and we are still trying to catch our breath. What a fun October we had!

Approximately 165 magic fans crowded into the Library Halloween night for the annual Magic Show. Larry Dunbar and Company did not disappoint! Enjoy the 'Alibi Shot', looks of wonder on all the little faces, looks of "How'd he do that?", reaction from Laiken Pinney, she was amazed she was able to turn 3 short ropes into one long one, just with the wave of her wand and of course there was no shortage of volunteers!

Laura Todd recently retired from her job as Circulation Desk Librarian at Laurens Public Library. She has been a valuable part of the Library team since February of 2018. We wish her well as she begins this new chapter of her life!

New novels this week include *On the Hunt* by Iris Johanson, *How My Neighbor Stole Christmas* by Meghan Quinn, *An Author's Guide to Murder* by Beatrix Williams and *My Three Dogs* by Bruce Cameron. Also, *The Wedding People* by Alison Espach, which is in memory of Mary Thompson.

In nonfiction we received *Revenge of the Tipping Point* by Malcom Gladwell.

November's Book Club selection is by one of our most popular historical fiction authors, Marie Benedict. *The Only Woman in the Room* is the fictionalized story of the scientist who became movie star Hedy Lamar. During WWII she escaped her Austrian arms-dealer husband while hiding a secret double life as a Jewish scientist and sharing vital information about the Third Reich. What an interesting insight into the life of a woman remembered mostly for her beauty.

**Mark Your Calendar**

November 18 @ 5:30 p.m. -  
Tot Times

November 25 @ 7 p.m. -  
Book Club *The Only Woman  
in the Room* by Marie Benedict

November 28-30 - Closed for  
Thanksgiving



**The Paper**

Published weekly by  
My Laurens, Inc.  
112 Walnut St.  
Laurens, IA 50554

Phone:  
(712) 841-2684

Fax:  
(712) 841-4662

Website:  
[www.thepapernow.com](http://www.thepapernow.com)

E-mail:  
[publisher@mylaurens.com](mailto:publisher@mylaurens.com)

Publisher:  
Rodney Johnson

Editor:  
Amanda Tendal

Rights to Use Content: The Paper, its content, archived materials, and our websites, are provided solely for your personal, non-commercial use. The Paper, its content, our websites and all the materials available on our websites are the property of My Laurens, Inc., and are protected by applicable copyright, trademark, and intellectual property laws. You may download, print or transmit The Paper for your personal, non-commercial use. Any commercial use of copyrighted materials requires prior authorization from My Laurens, Inc. Unless explicitly authorized by My Laurens, Inc., you may not modify copy, create derivative works, reproduce, republish, transmit, sell, or distribute in any manner or medium (including by email or other electronic means) any material from The Paper or our websites for commercial purposes. You may not use The Paper or materials available on our websites, in a manner that constitutes an infringement of our intellectual property rights/copyrights or that has not been authorized by My Laurens, Inc. For information about requesting permission to reproduce or distribute materials from The Paper, please contact My Laurens, Inc. at (712) 841-2684 or [publisher@mylaurens.com](mailto:publisher@mylaurens.com).

# At the Library



*At the Library  
with Glenda Mulder  
November 13, 2024*

You'll be seeing a familiar face at the Library a couple days a week. Vickie Erickson decided she wasn't ready to be fully retired, so she has joined our part time staff. She seems to fit in nicely, and we all look forward to working with her!

More and more of our library patrons (including me!) are enjoying historical fiction novels. November's Book Club selection is by one my favorites, Marie Benedict. *The Only Woman in the Room* is the fictionalized story of the scientist who because movie star Hedy Lamar. During WWII she escaped her Austrian arms-dealer husband while hiding a secret double life as a Jewish scientist and sharing vital information about the Third Reich. What an interesting insight into the life of a woman remembered mostly for her beauty.

The youngest of patrons at the Laurens Public Library love Tot Time with Tessa so much they crowded up to see what kind of creature had nibbled his way through this book! Tot Times are at 5:30 p.m. the first Wednesday & third Wednesday of the month. (Except we are going to skip that



first one in December, because that's when Santa will be at the Chamber Soup Supper. Not even Tessa can compete that that!

**Mark Your Calendar**

November 18 @ 5:30 p.m. - Tot Time  
November 25 @ 7 p.m. - Book Club  
*The Only Woman in the Room* by Marie Benedict  
November 28-30 Closed for Thanksgiving  
December 3 - Kids Make & Take @ 3:45 p.m.  
December 3 - Take it Tuesday @ 6:30 p.m.

---

Send Your News to  
**The Paper!**  
[www.thepapernow.com](http://www.thepapernow.com)

100% User  
Generated Content!

Subscribe and  
Submit **TODAY!**

*This Week at  
Bethany Lutheran*

**Pastor David E. Klappenbach**

**Wednesday: November 13, 2024**

7:00 PM ~ Confirmation

7:00 PM ~ Council Mtg.

**Sunday: November 17, 2024**

**Twenty-sixth Sunday after Pentecost  
STEWARDSHIP /**

**THANKOFFERING SUNDAY**

9:15 AM ~ Adult SS

9:15 AM ~ Youth SS

9:30 AM ~ Coffee Fellowship

10:30 AM ~ Worship w/Communion,  
SS sing, Noisy Offering

11:30 AM ~ Potluck

6:00 PM ~ Bethany Prayer Group

**Tuesday: November 19, 2024**

8:30 AM ~ Prayer Group

9:30 AM ~ Tuesday coffee at Bethany

**Wednesday: November 20, 2024**

7:00 PM ~ Confirmation

**Thursday: November 21, 2024**

2:00 PM ~ Circle Group

*Worship,*

*Love, Accept~ Together in  
Christ's Name*



*This Week at  
Laurens United  
Methodist Church*

**Pastor Deb Parkison**

**Wednesday, November 13:**

Caring Cards Meeting from 6:00-8:00  
PM in Fellowship Hall

Confirmation @ 6:30 PM at the  
Laurens UMC

**Sunday, November 17:**

Sunday School 9:15 AM-10:05 AM

Fellowship Coffee @ 9:30 AM

Worship Service 10:30 AM

Administrative Council Meeting @

11:30 AM in the Wesley Room

following Worship Service



*This Week at  
First Christian*

**Pastor Rev. Rita Cordell**

**Thursday, Nov. 14**

2-5 p.m. - Clothes Closet Open

**Sunday, Nov. 17**

9:30 a.m. - Sunday School

10:30 a.m. - Worship



*Resurrection  
of Our Lord  
Catholic Church*

**Pocahontas, IA -- Priest:  
Father Paul Nguyen**

**MASS TIMES:**

Daily Mass as scheduled in the  
weekly bulletin

Saturday at 5:00 PM and Sunday at  
10:30 AM

**Confessions:** Saturday 4:15 pm at  
Resurrection

Send Your News to

**The Paper!**

[www.thepapernow.com](http://www.thepapernow.com)

100% User

Generated Content!



## *ISU Extension and Outreach to Provide Disaster Response Education and Financial Consultation Services to Iowa Disaster Impacted Counties*

Iowa State University Extension and Outreach has received a \$516,000 contract for FEMA funding through the Iowa Department of Health and Human Services to provide disaster response education and financial consultation services. The funding also will provide support for the Iowa Concern hotline.

These services will be available to the following disaster impacted Iowa counties: Adair, Buena Vista, Cherokee, Clarke, Clay, Dickinson, Emmet, Harrison, Lyon, Mills, Montgomery, O'Brien, Plymouth, Polk, Pottawattamie, Ringgold, Shelby, Sioux, Story, Union and Woodbury.

The services are provided as a part of Project Recovery Iowa managed by the Iowa Department of Health and Human Services. Project Recovery Iowa provides emotional support, education, and basic crisis counseling and education regarding the reactions to and phases of the disaster. ISU Extension and Outreach's key feature of this project will be the Iowa Concern Hotline. Iowa Concern, at 800-447-1985, is available 24/7 and provides access to stress counseling, an attorney for legal education, and information and referral services for a wide variety of topics related to disasters.

This project will also support educational programs, such as youth and adult "Mental Health First Aid," "Question, Persuade, Refer," "Self-Care and Disasters," and "Money Smart." Personal financial consultation and farm financial analysis services will also be available.

David Brown, behavioral health state specialist with ISU Extension and Outreach and co-project lead, said, "Many organizations, groups and schools will have employees or students who are still reacting to the trauma associated with the tornado and flooding disasters. These disasters may have caused financial difficulties as well. We are here to provide resources and education that might help."

For more information about services available, please contact David Brown at [dnbrown@iastate.edu](mailto:dnbrown@iastate.edu) or 515-298-1505 or Danielle Day at [daday@iastate.edu](mailto:daday@iastate.edu).

**About Project Recovery Iowa.** Project Recovery Iowa helps individuals, families and their communities in recovering from the challenging effects of natural and human-caused disasters through the provision of community-based outreach and educational services.

**About Iowa Concern.** Iowa Concern, offered by ISU Extension and Outreach, provides confidential access to stress counselors and an attorney for legal education, as well as information and referral services for a wide variety of topics. With a toll-free phone number, live chat capabilities and a website, Iowa Concern services are available 24 hours a day, seven days per week at no charge. To reach Iowa Concern, call 800-447-1985; language interpretation services are available. Or, visit the website, [www.extension.iastate.edu/iowaconcern/](http://www.extension.iastate.edu/iowaconcern/), to live chat with a stress counselor one-on-one in a secure environment. Or, email an expert regarding legal, finance, stress, or crisis and disaster issues.

## *Commercial Ag Weed, Insect, and Plant Disease Pest Control Course Set for November 20*

Iowa State University Extension and Outreach Pocahontas County will host a Commercial Ag Weed, Insect, and Plant Disease Pest Control Continuing Instruction Course (CIC) for commercial pesticide applicators on Wednesday, November 20. The program, provided by the ISU Extension and Outreach Pesticide Safety Education Program (PSEP), is available at office locations across Iowa.

The local attendance site is 305 N Main Street, Poahontas, IA. Preregistration may be required. Walk-ins are not guaranteed admission. The course runs from 9:00 to 11:30 a.m. The registration fee is \$45 on or before November 13 and \$55 after November 13. To register or to obtain additional information about the CIC, contact the ISU Extension and Outreach Pocahontas County office at 712-335-3103.

The course will provide continuing instruction credit for commercial pesticide applicators certified in categories 1A, 1B, and 1C. Topics covered will include application equipment use, maintenance, and calibration; safe application techniques; and pests, pest management, and pesticides.

Certified Crop Adviser (CCA) Continuing Education Units (CEUs) will be offered at this program. Interested participants should bring their CCA number. Additional information and registration forms for this and other courses offered by the PSEP program can be accessed at <http://www.extension.iastate.edu/PSEP>.

## *Registration Open for 2024 Integrated Crop Management Conference*

The 35th Annual Integrated Crop Management Conference is set for Dec. 11-12 at the Meadows Events and Conference Center at Prairie Meadows in Altoona. This premier event, hosted by Iowa State University Extension and Outreach and the College of Agriculture and Life Sciences, will provide crop production professionals with the latest information, cutting-edge research updates and tools to prepare for 2025.

“The ICM Conference has always been a great opportunity for farmers, industry, ag retailers, agronomists and educators to network with each other and interact with their university specialists,” said Erin Hodgson, professor and extension entomologist at Iowa State University. “We are excited to offer a great program full of new information to prepare for 2025, including a strong slate of invited speakers.”

This year’s conference features 35 workshops covering crops, pests, nutrients, and soil and water management topics. Prairie Meadows offers updated facilities, an on-site hotel and short distances between sessions, ensuring a convenient and comfortable experience for attendees with time to network, visit with sponsors and view exhibits.

The conference will feature six invited speakers:

- Seth Naeve, University of Minnesota, will discuss the timing, pros and cons of early soybean planting.
- Anibal Cerrudo, University of Minnesota/Argentinian National Institute for Agriculture, will share recent research on the critical growth stages when soybean yield is determined.
- Kelsey Fisher, Connecticut Agricultural Experiment Station, will talk more on a re-emerging pest, the European corn borer, which is becoming resistant to Bt corn.
- Horacio Lopez-Nicora, The Ohio State University, will discuss current and future challenges in managing soybean cyst nematodes.
- Gretchen Paluch, Iowa Department of Ag and Land Stewardship Pesticide Bureau, will provide important updates regarding the Endangered Species Act and pesticide applications.
- Jodi DeJong-Hughes, University of Minnesota Extension, will focus on compaction and mitigating compaction that reduces crop yields.

In addition to the invited speakers, Iowa State University has five new faculty and staff who will be presenting at this year’s conference:

- Rabail Chandio, assistant professor and extension economist
- Wesley Everman, assistant professor and extension weed specialist
- Shelby Gruss, assistant professor and extension forage specialist
- Richard Roth, assistant professor and nitrogen specialist
- Ethan Thies, conservation field specialist

Certified Crop Advisers can receive up to 12 continuing education credits. The program is also approved for Iowa commercial pesticide applicator continuing education in categories 1A, 1B, 1C and 4 for 2024.

To register, visit the ICM Conference website. Pre-registration is required to attend. Early registration is \$250 and ends at midnight, Nov. 17. After Nov. 17, the fee increases to \$300, and registrations will be accepted until midnight, Nov. 27. No registrations will be accepted at the door.

For registration-related questions, please contact ISU Registration Services at 515-294-6222 or [registrations@iastate.edu](mailto:registrations@iastate.edu). For all other inquiries, email [crops@iastate.edu](mailto:crops@iastate.edu).

## *Vilsack Named National Friend of Extension by Epsilon Sigma Phi*

Epsilon Sigma Phi has selected U.S. Secretary of Agriculture Tom Vilsack as its 2024 National Friend of Extension in the elected official category. The award will be presented at the national ESP conference Oct. 30 in Virginia Beach, Virginia.

Epsilon Sigma Phi is the largest organization of extension professionals.

"We are very pleased to recognize Secretary Vilsack as an ESP Friend of Extension for his role as a vital partner with the nationwide Cooperative Extension System. His passion for helping communities thrive and his awareness of the role extension professionals play in educating and impacting communities across the United States is meaningful," said Travis West, ESP national president.

"I want to thank you for recognizing me as the 2024 National Friend of Extension of Epsilon Sigma Phi. This award is deeply meaningful because it reflects the partnership that we've built together to support rural America," Vilsack said in a video message to the conference attendees.

He noted that extension professionals serve as a bridge between research institutions and the community, translating research findings into practical applications that benefit stakeholders.

"The work that extension professionals do every day, whether helping farmers adopt sustainable practices, supporting rural businesses or working with USDA programs like broadband development, directly impact the future of rural communities. Their deep ties to local communities allow extension professionals to leverage resources and meet specific local needs, fostering leadership and self-sufficiency at the grassroots level," Vilsack said.

The Cooperative Extension System is a partnership of USDA-NIFA, the nation's land-grant universities and local county government.

One of the oldest organizations for extension professionals, Epsilon Sigma Phi focuses on fostering standards of excellence in the Cooperative Extension System and developing the extension profession and professionals.

## *Strip-till, Cover Crop, Relay Intercropping Field Day to Be Held Near Gilmore City on November 20*

Iowa Learning Farms, in partnership with Humboldt County Soil and Water Conservation District, will host a strip-till, cover crop and relay intercropping field day on Wednesday, Nov. 20, from 10:30 a.m. to 12:30 p.m. at Jay Lynch's farm near Gilmore City. The free event is open to farmers and landowners and includes a complimentary meal.

Cover crops offer many benefits to farmers and landowners, including reduced soil erosion, weed suppression potential, reduced nitrogen and phosphorus loads entering water bodies, and increased organic matter in the soil. When paired with strip-tillage, additional benefits include increased water infiltration and reduced erosion during heavy rain events. The field day will also explore the emerging practice of relay intercropping a small grain in the soybean phase of the rotation to be able to grow three crops in two years.

Host Jay Lynch began adopting a no-till/strip-till system about 15 years ago on his family's Century Farm and has discovered that the key to higher yield potential, enhanced soil tilth and effective conservation revolves around soil health. Along with the many conservation benefits of strip-till, its time-saving advantages appeal to Lynch.

"Strip-till means I don't have to worry about fieldwork in the spring," he said. "It frees me up to deliver seed and then jump in the planter and go."

The Lynch family started using cover crops in 2012 on 140 acres of prevented-plant land. Since then, cereal rye has become the main cover crop in the Lynch family's area. For the last four years, they have grown cereal rye for use as cover crop seed for their farm and use oats after rye harvest to help keep the ground covered.

The field day will also feature Humboldt County farmer Doug Adams discussing his experiences with relay intercropping on his farm and Mike Bourland, Iowa Department of Agriculture and Land Stewardship senior environmental engineer, providing an update on the closure of the last agricultural drainage wells and construction of the wetland mitigation bank near Gilmore City.

The field day will be held in a heated shop at the Lynch Farm, 809 SE D Ave., Gilmore City. The farm is located about 0.5 miles east of Gilmore City on the north side of the road. Field day signs will mark the driveway.

The event is free and open to farmers and landowners, though reservations are required to ensure adequate space and food. For reasonable accommodations and to RSVP, please contact Liz Ripley at 515-294-5429 or [ilf@iastate.edu](mailto:ilf@iastate.edu) by Nov. 13. Attendees will be entered in a drawing for ISU Prairie Strips honey.

Iowa Learning Farms field days and workshops are supported by the USDA Natural Resources Conservation Service. For more information about Iowa Learning Farms, visit [www.iowalearningfarms.org](http://www.iowalearningfarms.org).

## *Yard and Garden: Preparing Plants for Winter*

As the growing season comes to an end, gardeners face the challenge of preparing some of their tender plants for winter. Horticulture specialists with Iowa State University Extension and Outreach provide practical tips and techniques for overwintering plants not reliably winter hardy in Iowa, ensuring they not only survive but flourish in the seasons to come.

**How do I overwinter roses?** Not all roses require winter protection. Many of the roses commonly sold in garden centers, such as Easy Elegance® and Knock Out®, are winter hardy and require no extra care; just prune dead canes in April as the new growth emerges.

However, hybrid tea, grandiflora and floribunda roses do need winter protection due to their vulnerability to cold. Low temperatures and rapid temperature changes in winter can severely injure and sometimes kill unprotected modern roses.

Prepare non-winter hardy roses for winter after the plants have been hardened by exposure to several nights of temperatures in the low to mid-20s. Usually, this is early to mid-November in Iowa. Start by clearing debris and diseased leaves. This will help reduce disease problems next season. Then, loosely tie the canes together with twine to more easily work around and protect the thorny canes. Next, cover the bottom 10 to 12 inches of the canes

with soil. Place additional material, such as straw or leaves, over the mound of soil. Use a cylinder of wire fencing to help hold these materials in place.

**How do I overwinter butterfly bush and other tender woody plants?** In Iowa, there are several woody plants that are marginally hardy and grown more like perennials. These plants are root hardy in the state, but their above-ground growth is killed over winter in most years.

Plants like butterfly bush, crape myrtle, big leaf hydrangea and some roses will have die-back during the winter. During mild winters, that dieback will be less severe, so leaving all wood in place allows for more of the plant to potentially make it through the winter, giving you a larger plant in spring.

To protect them further, add 2 to 3 feet of light mulch, like straw, around the dormant plants inside a cylinder of wire fencing. Wait until new growth begins to emerge in spring and prune these tender woody plants back to live tissue.

**How do I overwinter unplanted perennials, shrubs, and trees?** If you can't plant a perennial or woody plant before winter, take steps to protect it while still in its container.

Containerized plants shouldn't be left above ground, as cold can damage their crowns and roots.

The most reliable way to overwinter container-grown perennials is to dig holes in a protected garden area and set the pots in the ground, backfilling with soil as if planting them. Soil is a good insulator and will protect the plant's roots from extreme cold. This should be done after the plants go dormant but before the ground freezes, usually a few weeks after the first frost. Pull

containers out of the soil in spring when the extreme temperatures of winter have passed and the soil thaws.

Containerized plants can also be overwintered by placing them in an attached, unheated garage or other structure with temperatures that can stay consistently between 20 to 45 degrees F. Many unheated structures can vary more widely in temperature than this. It is important to monitor and adjust temperatures inside the structure if needed.

**How do I prepare strawberries for winter?** June-bearing strawberries should be mulched in the fall to prevent winter injury to flower buds, crowns and roots. Temperatures below 20 degrees F can harm unmulched plants.

Mulch strawberries after they go fully dormant but before temperatures drop below 20 degrees F. In Iowa, this is typically late October to mid-November in northern portions of the state and mid-to-late November in southern areas.

Use clean, weed-free straw, applying 3 to 5 inches initially. The material should eventually settle to 2 to 4 inches. In windy areas, secure the straw with wire or plastic fencing held down by heavy objects like bricks.

Avoid using leaves as mulch, as they can mat together in layers, trapping air and creating space for ice to form, not providing adequate protection. Leaf mulch may damage plants due to excess moisture trapped under the material.

**How do I prepare asparagus for winter?** Asparagus foliage can be cut back to the ground after it has been destroyed by cold temperatures in the fall. However, it's best to leave it standing over winter. The dead foliage catches snow, which protects the crowns from freeze damage. Remove the foliage in late March or early April before spears emerge.

## ***2024 Forage Webinar Series Continues on December 10***

The I-29 Moo University and the Northern Plains Forage Association have joined forces to continue the 2024 Forage Webinar Series with a fast-paced evening program on Tuesday, Dec. 10 from 7 to 9 p.m.

The program will feature six presenters with only 10 to 20 minutes to outline the most important bullet points of their topics concerning forage production.

Presenters are nationally recognized leaders on their topics.

Madelynn Wuestenberg is an agricultural climatologist with Iowa State University Extension and Outreach, dedicated to enhancing climate resilience in Iowa's agriculture and food systems. In her role, which began in January 2024, Wuestenberg engages with farmers, landowners and industry members on climate-related challenges, delivering research-based insights and actionable solutions.

A native of Slater, Wuestenberg's deep connection to agriculture comes from her family's farming background. She earned a bachelor's degree in 2022 and a master's degree in agricultural meteorology in 2023, both from Iowa State. Her graduate research focused on assessing the environmental impacts of climate change using advanced agroecosystem models.

Amber Friedrichsen, editor of Hay & Forage Grower, will give an overview

of alfalfa growing conditions, harvest conditions and forage test results so far this year. Friedrichsen grew up on a farm in eastern Iowa and graduated from Iowa State in 2023 with degrees in agricultural communications and agronomy. While in college, Friedrichsen served as the editorial intern for Hay & Forage Grower for two summers and was an associate editor before assuming her current position.

Deb Sumac is a supervisory research geneticist with the USDA Agricultural Research Service. She focuses on the diseases and pathogens of alfalfa with collaborations to develop a reference genome sequence for alfalfa and universal DNA markers for alfalfa breeding. Sumac will discuss disease pressure in alfalfa.

Scott Newell is the alfalfa outreach specialist with UW-Madison Extension. He will discuss the potential effects of 2024 weather conditions on 2025 alfalfa production, as well as the possible ramifications of the 2025 weather forecast on alfalfa.

An Iowa State agronomy graduate, Newell did his graduate work in alfalfa genetics at UC Davis under Charlie Brummer. Eager to be back in the Midwest, Newell supports alfalfa outreach and education nationally, specifically in the upper Midwest. He is focused on improving alfalfa competitiveness to ensure it remains a key part of the U.S. agriculture landscape and dairy ration, providing all the benefits of a perennial legume to a diversified rotational system.

Everett Thomas has worked as an agronomist in northern New York for over 50 years, first for Cornell University and then for 27 years at the William H. Miner Agricultural Research

Institute in Chazy, New York. While at Miner Institute, his responsibilities included crop production for its herd of 350 Holstein dairy cows. He was also involved in applied research and teaching an undergraduate course in forages.

Thomas is president of Oak Point Agronomics and involved in forage crop consulting in the United States and internationally. He's writer/editor for the Miner Institute Farm Report and is the author of almost 700 technical and popular press articles, including about 200 articles for Hoard's Dairyman.

Thomas will discuss weather influences on alfalfa-grass seeding rates on the yield and quality of forage grasses.

Jason Johnson is an associate professor and extension economist in the Department of Agricultural Economics at Texas A&M. Johnson is also a registered investment advisor regulated by the Texas State Securities Board, CRD# 141350. His educational programming focuses on all economic aspects of crop and livestock production blending traditional risk management strategies with more specific recommendations for family financial planning.

Johnson will discuss the economics of forage storage structures.

There is no fee to attend the webinar, but participants must register at least one hour prior to the webinar at <https://go.iastate.edu/FORAGE2024>.

For more information, contact: in Iowa, Fred M. Hall, 712-737-4230; in Minnesota, Jim Salfer, 320-203-6093; in Nebraska, Ben Beckman, 402-254-6821; or in South Dakota, Sara Bauder, 605-955-7378.

## *Produce Safety Training for Fruit and Vegetable Farmers Begins on December 13*

The Iowa State University Extension and Outreach Safe Produce Program will host produce safety training for fruit and vegetable farmers beginning in December and concluding in April 2025.

Produce Safety Alliance Grower Training is a U.S. Food and Drug Administration approved produce safety education program for farmers growing and harvesting fruits and vegetables for human consumption with intent to enter the commercial market or public distribution. The training is suitable for commercial fruit and vegetable growers, home produce gardeners and other produce enthusiasts to learn and understand produce safety as defined in the Food Safety Modernization Act Produce Safety Rule and Good Agricultural Practices standards.

For commercial fruit and vegetable growers, the PSA Grower Training course satisfies the FSMA Produce Safety Rule requirement outlined in §112.22(c): “at least one supervisor or responsible party for

your farm must have successfully completed food safety training at least equivalent to that received under standardized curriculum recognized as adequate by the Food and Drug Administration.”

Home produce gardeners and produce enthusiasts will acquire the produce safety knowledge and practices to assure fruits and vegetables grown and harvested in their garden are safe for human consumption.

The PSA Grower Training course event registration fee is \$20 USD for Iowa fruit and vegetable producers and their employees and \$120 USD for others. The fee cost includes course attendance, a PSA Grower Training manual, and an American Food and Drug Officials certificate of completion.

Remote online events will be on Dec. 13, 2024, and Feb. 7, 2025, in Zoom format.

In-person events will be on March 13, 2025, at the Iowa State University Extension and Outreach Linn County office in Hiawatha, and on April 4, 2025, at the ISU Extension and Outreach Warren County office in Indianola.

Registration for a PSA Grower Training course event can be found on the Iowa State University Safe Produce website in the “Events” tab. Select a preferred event and complete the online registration form and pay the registration fee with a credit card.

This project is funded by the State and Territory Cooperative Agreement

to Enhance Produce Safety in Preparation of Implementation of FDA’s Rule: Standards for the Growing, Harvesting, Packing and Holding of Produce for Human Consumption, through FDA grant 1U18FD005810-01 (CFDA #93.102-Food and Drug Administration Research).

---

Send Your News to  
**The Paper!**

[www.thepapernow.com](http://www.thepapernow.com)

100% User

Generated Content!

Subscribe and  
Submit **TODAY!**

## *Women in Ag Coming Together to Cultivate Confidence and Harvest Happiness*

The Iowa State University Extension and Outreach Women in Ag Leadership Conference takes place at the Gateway Hotel and Conference Center in Ames. The two-day event begins on Wednesday, December 4, from 11:15 a.m. to 8 p.m. and continues Thursday, December 5, from 8:30 a.m. to 4 p.m.

This year's theme, "Breaking Ground, Seeding Success," reflects the hard work women put into their agricultural careers and the rewards they achieve. The conference focuses on career advancement, leadership development and trending topics in agriculture.

A special feature of the conference this year is the option to take part in a Red Cross First Aid and Life-Threatening Bleeding and Tourniquet Application certification course.

On Wednesday, the popular campus tours will be back. Attendees can choose from one of five tours highlighting everything from a Victorian era Christmas at the Farm House Museum to Regenerative

Agriculture at the Bioeconomy Institute.

As the conference opening speaker, Iowa's homegrown advocate for women in agriculture, Lexi Marek Beeler, will discuss three actions all women can implement to make an impact.

Intensive workshops feature strong women who are leaders and role models. Mastering mental strength to thrive under pressure, leading effectively on the board, and managing land and sharing a vision for the farm are key skills they'll help attendees build. The day ends with a relaxed dinner, networking and a social hour.

On Thursday, the conference will feature keynote speaker Heather Malenshek of Land O' Lakes Inc. Forbes named Malenshek as one of the country's most influential chief marketing officers. She has a passion for helping others achieve their true potential.

The 2024 Women Impacting Ag honorees Chris Cornelius, Julie Kenney, Wendy Johnson and Janette Smith will share their stories. The luncheon panel will feature Angie Treptow and Karen Rawson, leaders in finance and lending, who will share their stories and discuss the farm economy.

The breakout sessions offer topics such as agricultural entrepreneurship, family business transitions, better conversations, the emotional connection of marketing, leading as

communicators and growing into farm management roles.

The capstone speaker is April Hemmes. Her passion for agriculture is at the core of who she is. Throughout her 40-year career in farming she has taken on leadership roles from supporting the local FFA chapter to becoming a director on the United Soybean Board.

Early bird registration is available through Nov. 22 and saves \$20. Regular registration is \$140.00 for adults and \$80 for students. Scholarships may be requested. Register online at [www.regcytes.extension.iastate.edu/womeninag](http://www.regcytes.extension.iastate.edu/womeninag). Farm Credit Services of America is a major sponsor.

The ISU Extension and Outreach Women in Ag Program improves the quality of life in Iowa by providing research-based educational programs to expand agricultural enterprise, improve natural resource management and support the community of women in agriculture. Visit [www.extension.iastate.edu/womeninag](http://www.extension.iastate.edu/womeninag) to learn more about our programs.

## *Year-end Beef Quality Assurance Certification Trainings Offered in Northwest Iowa*

Iowa State University Extension and Outreach will host four year-end Beef Quality Assurance (BQA) certification trainings in northwest Iowa.

These trainings feature significant changes in the beef industry and best management practices to provide sustainable, high-quality beef to consumers, and Iowa State University extension beef specialist Beth Doran said new developments such as EID traceability, biosecurity, and animal health will be featured.

“Producers and ag-business professionals who attended an in-person training three years ago have been receiving notice from their packer that their certificate is expiring, and they need to recertify,” Doran said. “Most major packers and most local livestock auctions require a feedlot producer to have a current certificate.”

To certify or recertify, producers can attend one of the following in-person trainings. All sessions are free of charge, but preregistration is requested four days in advance of the training you plan to attend.

- Nov. 26 – 10 a.m.-noon. ISU Extension and Outreach Cherokee County Office, 209 Centennial Drive, Cherokee. RSVP to 712-225-6196.
- Dec. 5 – 1-3 p.m. ISU Extension and Outreach Plymouth County Office (Le Mars Convention Center Lower Level), 251 12th St. SE, Le Mars. RSVP to 712-546-7835. Hosted in conjunction with the morning Kent Nutrition Meeting.
- Dec. 9 – 1-3 p.m. ISU Extension and Outreach O’Brien County Office, 340 2nd St. SE, Primghar. RSVP to 712-957-5045.
- Dec. 16 – 10 a.m.-noon. ISU Extension and Outreach Sioux County Office, 400 Central Ave. NW, Suite 700, Orange City. RSVP to 712-737-4230.

Producers unable to attend an in-person training may complete their training online at <https://www.bqa.org/>.

The Iowa BQA program is funded by the Iowa Beef Industry Council and Beef Checkoff, and the education is delivered as a joint effort in conjunction with the Iowa Beef Center and ISU Extension and Outreach.

For more information, contact Doran at 712-737-4230 or email [doranb@iastate.edu](mailto:doranb@iastate.edu).

## *I-29 Moo University Webinar On Nov. 19 To Feature Metritis In Dairy Cows*

The I-29 Moo University Dairy Webinar Series continues Tuesday, November 19 from 12 noon to 1 p.m. CDT, with Dr. Adrian Barragan discussing Metritis in dairy cows.

Dr. Barragan is involved in Penn State Extension and Outreach activities and field investigations and develops and performs applied research to help dairy producers. His research interests have been related to developing new disease preventive practices to improve cow welfare and fertility and developing better training and management programs for Spanish-speaking farm employees in dairy operations.

In this webinar, Dr. Barragan will cover the latest discoveries on uterine infection diagnosis and preventative and treatment strategies. He will provide applied concepts that fit farm logistics and discuss best recommendations to manage these diseases in different farm settings (e.g., conventional versus organic).

There is no fee to participate in the webinar; however, registration is required at least one hour prior to the webinar. Register online at <https://go.iastate.edu/NOVI29MOOU>.

For more information, contact: in Iowa, Fred M. Hall, 712-737-4230; in Minnesota, Jim Salfer, 320-203-6093; or in South Dakota, Patricia Villamediana, 605-688-4116.

I-29 Moo University is a consortium of Extension dairy specialists from the land-grant universities in Iowa, Minnesota, Nebraska, and South Dakota. The I-29 Moo University is a multi-state learning collaboration and connects extension dairy staff with the dairy community to share research, information and management practices through workshops, webinars, e-newsletters, podcasts, and on-farm tours. For more information about the I-29 Moo University Collaboration and programs visit [www.i29moou.com](http://www.i29moou.com).